



HPLC Diode Array Detector



WORLD of TEST.com



The HPLC Diode Array Detector provides detailed full-spectrum data, enabling compound identification through spectral comparison with entries in the database. Furthermore, within the workstation, users can perform peak purity determination. This detector offers a high sensitivity mode for analyzing low concentration samples, reaching a signal-to-noise ratio similar to that of the UVD (Ultraviolet Detector).

APPLICATIONS

HPLC Diode Array Detector



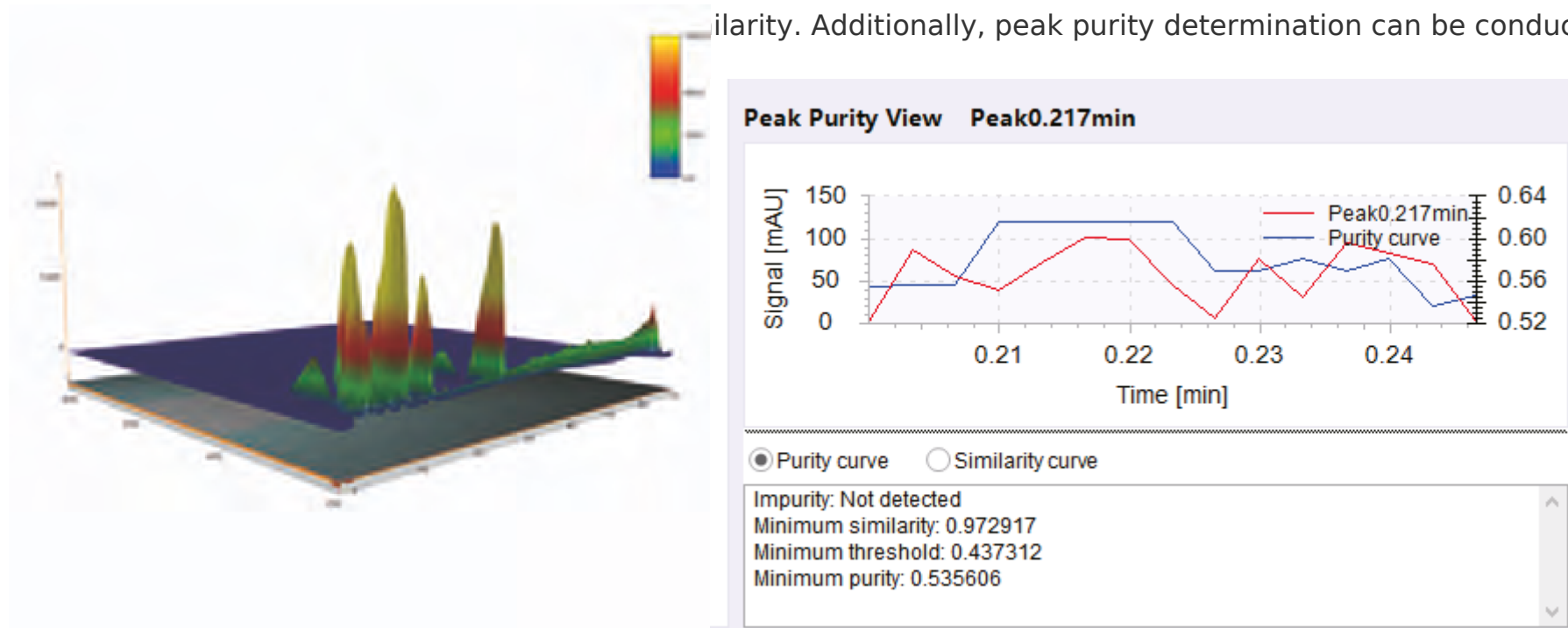
FEATURES

HPLC Diode Array Detector Features

1. PRECISION

SPECTRAL SIMILARITY ALIGNMENT AND PEAK PURITY DETERMINATION ARE PERFORMED FOR PRECISE QUALITATIVE AND QUANTITATIVE ANALYSIS

The HPLC Diode Array Detector offers comprehensive full-spectrum data. Compounds can be identified by comparing their similarity. Additionally, peak purity determination can be conducted directly



HIGH SENSITIVITY - CLOSE TO UV DETECTOR

The high sensitivity mode is available for analyzing low concentration samples, allowing the HPLC Diode Array Detector to achieve a signal-to-noise ratio comparable to that of the UVD (Ultraviolet Detector).

Sample: 1.0×10^{-7} g/mL naphthalene standard solution

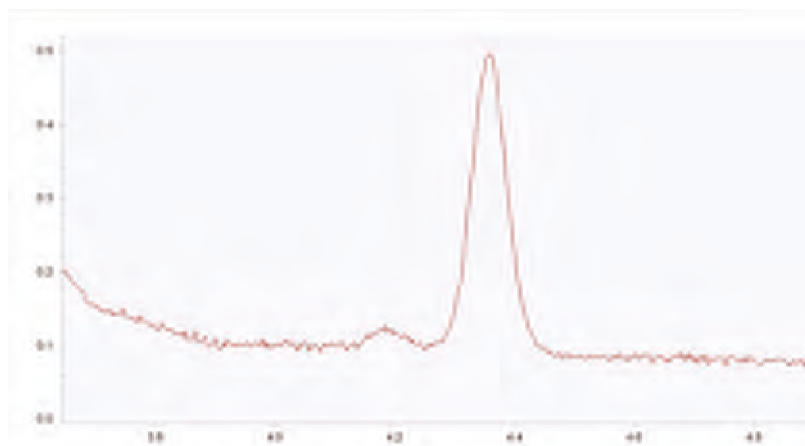
Column: C18, 4.6*250mm, 5 μ m

Mobile phase: 95% methanol +5% water

Flowrate: 1.0mL/min

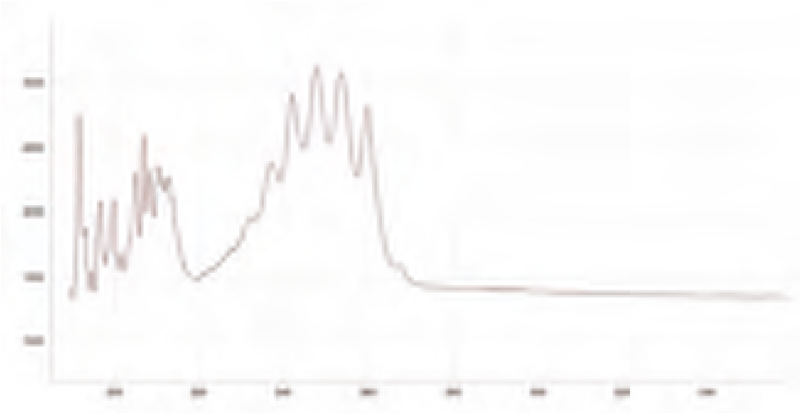
Injection volume: 20 μ L

Wavelength: 254nm



ACHIEVING MORE ACCURATE INSPECTION DATA BY HIGH-RESOLUTION SPECTRA.

Operating in high-resolution mode during compound detection enables the generation of a more detailed spectral map, facilitating improved analysis of complex samples.

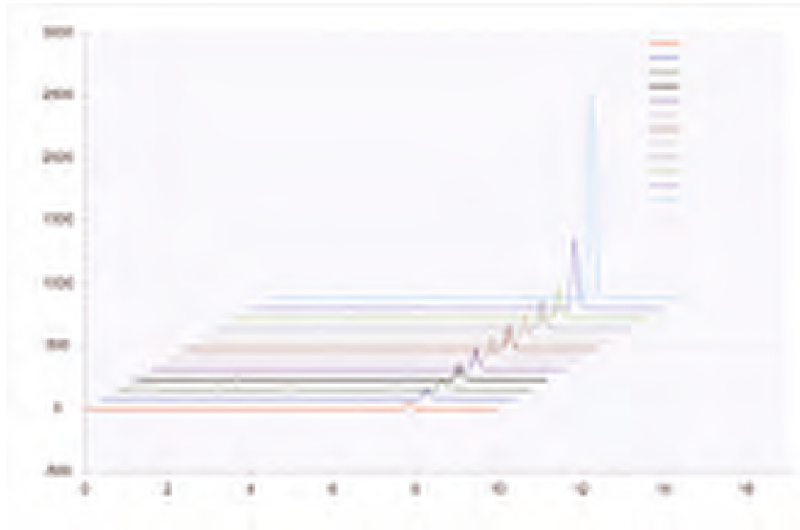


2. EASE OF USE

SUPPORTS 12-CHANNEL REAL-TIME DATA COLLECTION

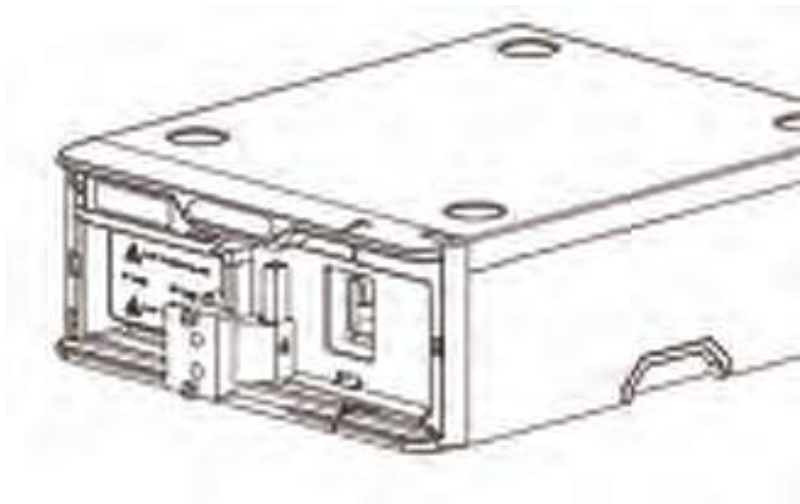
Drastically improve analysis efficiency with these features:

- Set up to 12 wavelengths for simultaneous real-time detection.
- Perform real-time analysis at a high sampling rate of up to 150 Hz.
- Enable full-spectrum detection for comprehensive analysis.



RAPID SPECTRAL SCANNING FOR MULTIPLE USE

When equipped with a cuvette holder, samples can be swiftly loaded directly into the cuvette for rapid spectral scanning, enabling the functionality of a UV spectrophotometer.



TECHNICAL SPECIFICATIONS

HPLC Diode Array Detector Technical Specifications

Light source	Deuterium (transmission type) & Tungsten lamp
Wavelength range	190~800nm
Slit width	1nm, 2nm, 4nm, 8nm
Wavelength accuracy	+/- 1nm
Wavelength precision	+/- 0.1nm
Linearity	> 2.0 AU
Wavelength calibration	Holmium glass



ADVANCED TESTING TECHNOLOGIES

USA | CANADA | UAE | GCC | EU | INDIA | APAC | AFRICA | LATIN AMERICA

Connect with us

Contact our **QualiTeam** today to find out how we can help your organization **select the most suitable testing solution** for your application, requirements, and budget.

Qualitest USA (Corporate Sales Office)

Toll-Free: 1.877.884.TEST (8378) | Fax: 954.697.8211
E-mail: info@qualitest-inc.com
Address: 8201 Peters Rd., #1000,
Plantation, FL 33324, USA.

Qualitest Canada & International

Tel: +1.905.944.9825 | Fax: +1.905.944.0304
E-mail: sales@qualitest-inc.com
Address: 70 East Beaver Creek Rd., #9, Richmond Hill,
Ontario L4B 3B2, Canada.

Qualitest Latin America (Mexico and LATAM Region)

E-mail: ventas@qualitest-inc.com

Qualitest KSA (Regional Office)

Tel: +966 11 500 6659
Address: Level 7, 3.09, District 3, King Abdullah
Financial District, Riyadh, Saudi Arabia

Qualitest Singapore (ASIA PACIFIC Regional Office)

Tel: +65 6393 5480 | E-mail: singapore@qualitest-inc.com
Address: 50 Raffles Place, Singapore Land Tower,
Level 46, Singapore, 048623.

Qualitest Indonesia (Representative Office)

Tel: +62 21 2985 9522 | Fax: +62 21 2985 9889
E-mail: indonesia@qualitest-inc.com
Address: One Pacific Place Level 11, Jl. Jend. Sudirman,
Kav. 52-53, SCBD Area, Jakarta 12190, Indonesia.

Qualitest FZE (Regional GCC/ME Office)

Tel: +971 4 8819252 | Fax: +971 4 8819262
Email: gcc@qualitest-inc.com
Address: Jafza One, BB 1610, Jebel Ali Free Zone,
PO Box 261440, Dubai, UAE.

Qualitest India

E-mail: india@qualitest-inc.com
Address: 15th Floor, Dev Corpora, Pokhran Road No.1,
Eastern Express Highway, Thane, Maharashtra,
Mumbai, 400601, India

