



Member of
**(WORLD
of TEST)**

WORLDofTEST.com



UPRIGHT METALLURGICAL MICROSCOPE - QM900



Upright Metallurgical Microscope - QM900, featuring an excellent NIS optical system for high-resolution imaging. With a modular design and intuitive controls, this microscope offers flexibility for various industrial and materials science applications.

The QM900 features NIS45 series objectives, Nomarski DIC, and multiple observation methods such as Darkfield, Transmitted Light, Polarized Light, and Differential Interference Contrast. Ergonomically designed for comfort, it includes a remote control pad, shortcut buttons, and an ECO function for energy efficiency. Elevate your microscopy experience with the QM900 series.

APPLICATIONS

Upright Metallurgical Microscope - QM900 by Qualitest

Excellent NIS Optical System

With an excellent NIS optical system, the QM900 series microscope provides high-resolution and chromatic aberration-corrected images both in the eyepieces and on the monitor.

Modular Design

The QM900 series has been designed with modularity to meet various industrial and materials science applications. It gives users the flexibility to build a system for specific needs.



FEATURES

Upright Metallurgical Microscope Features:

Intuitive Microscope Controls

- **Remote Control Pad**
 - Switch objectives effortlessly with rotating buttons.
 - Self-define two commonly used objectives for quick access.
 - Swap between defined objectives easily with the green button.



- **Shortcut Buttons**

- Quickly switch between 2 preset objectives.
- Customize shortcut buttons with other user-defined functions.



- **ECO Function**

- Microscope light turns off automatically 30 minutes after operators leave.
- Saves energy and extends lamp lifetime.



Comfortable and Easy to Use

- **NIS45 Series Objectives**

- High-resolution imaging with carefully selected high-transparent glass.
- Accurate reproduction of natural specimen colors.
- Variety of objectives available, including polarizing and long-working distance for special applications.



- **Nomarski DIC**

- Newly designed DIC module for 3D imaging.
- Ideal for observing LCD conducting particles and surface scratches on hard disks.



- **Ergo Tilting Trinocular Head**

- Eyetube adjustment from 0° to 35°.
- Connect trinocular tube to SLR and digital cameras.
- 3-position beam splitter (0:100, 100:0, 80:20) with customizable assembly on either side.



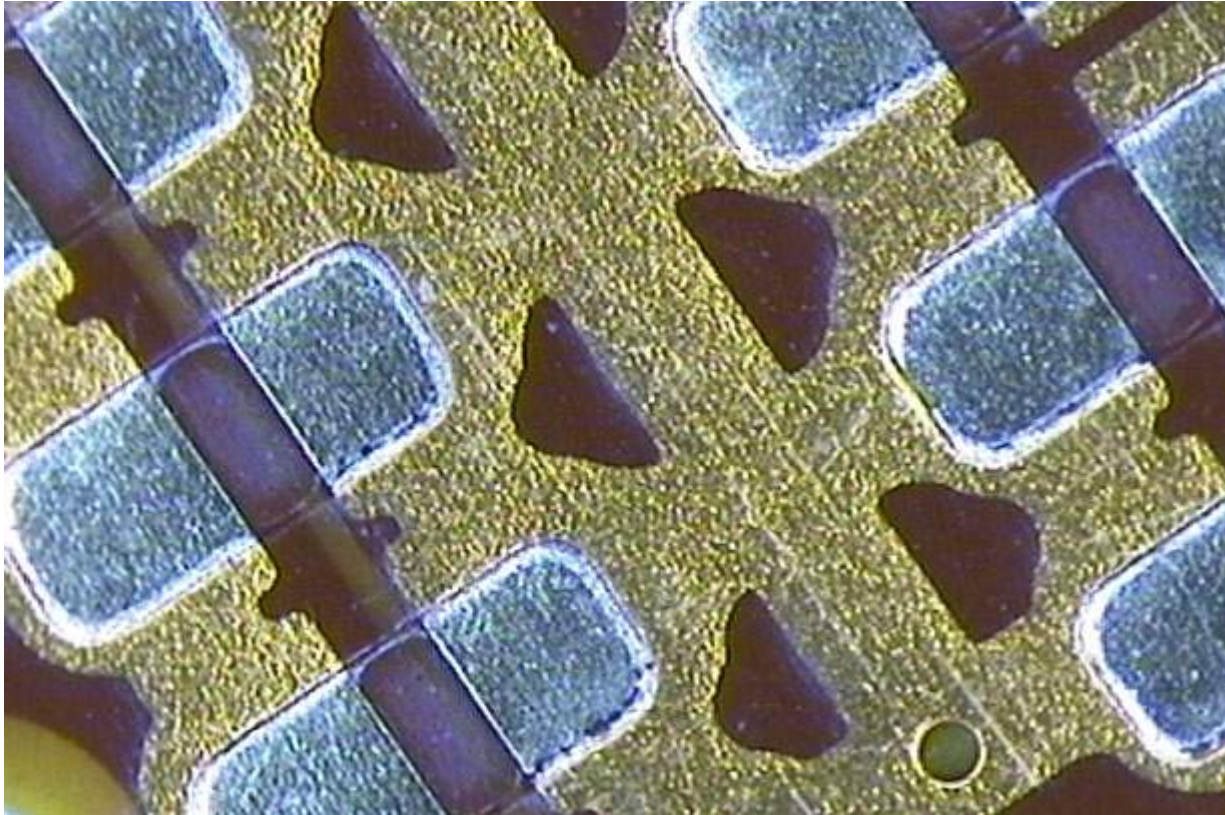
- **Focusing System**

- Knobs can be adjusted to the left-hand or right-hand side.
- Enhanced comfort of operation based on operator habits.



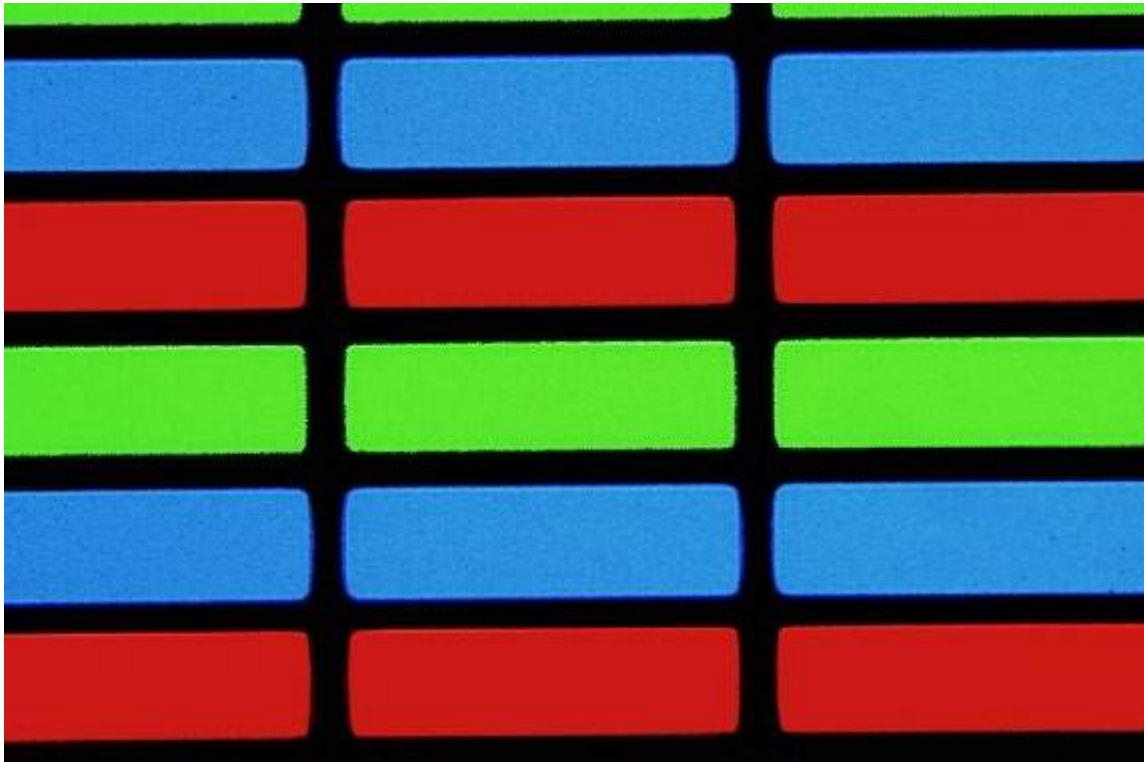
Various Observation Methods

- **Darkfield**
 - Observation of scattered or diffracted light.
 - Ideal for detecting minute scratches or flaws on a specimen.



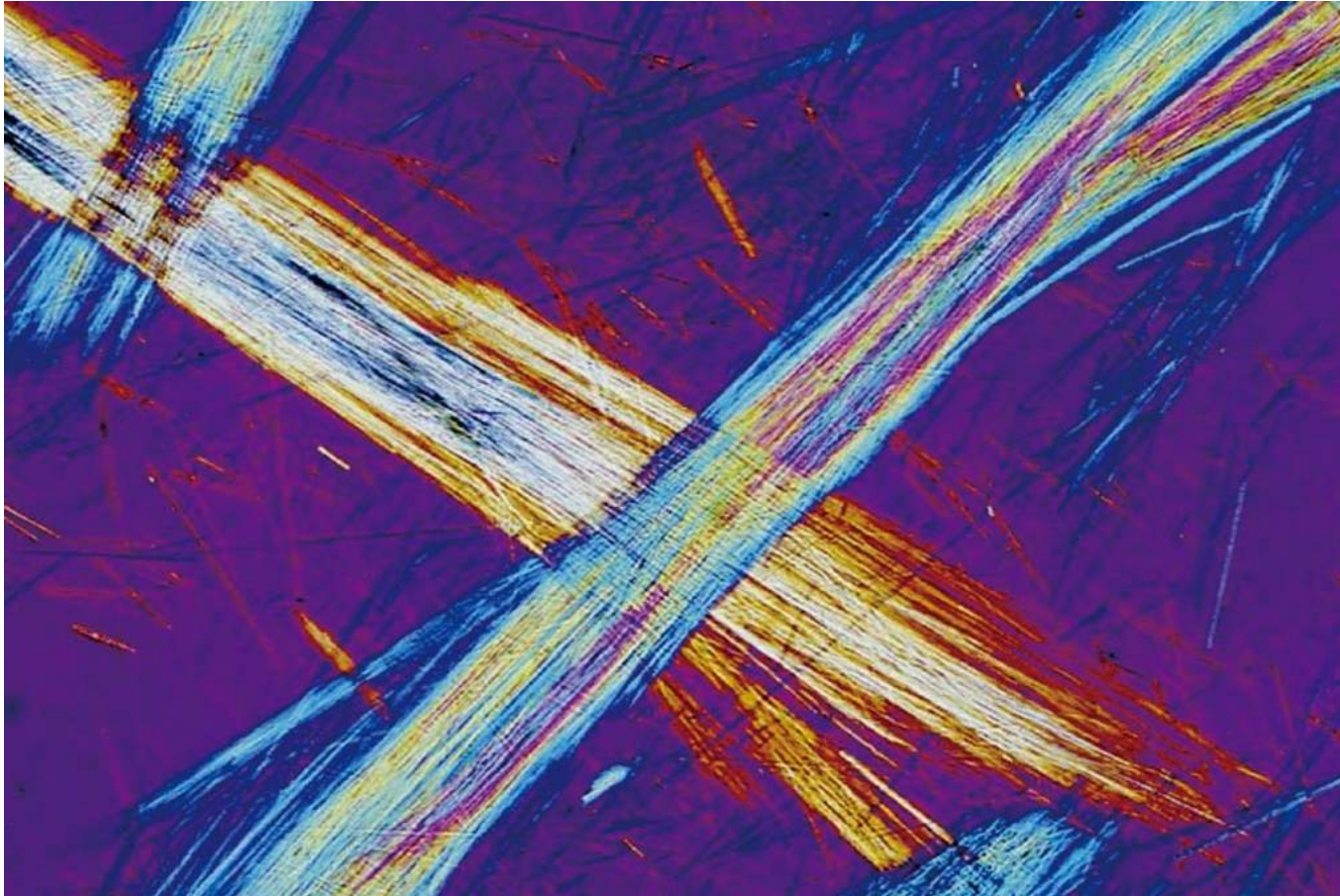
- **Transmitted Light Observation**

- True transmitted light observation for transparent specimens.
- Convenient examination in transmitted brightfield and polarized light.



- **Polarized Light**

- Utilizes polarized light for observing metallurgical structures, minerals, LCDs, and semiconductor materials.

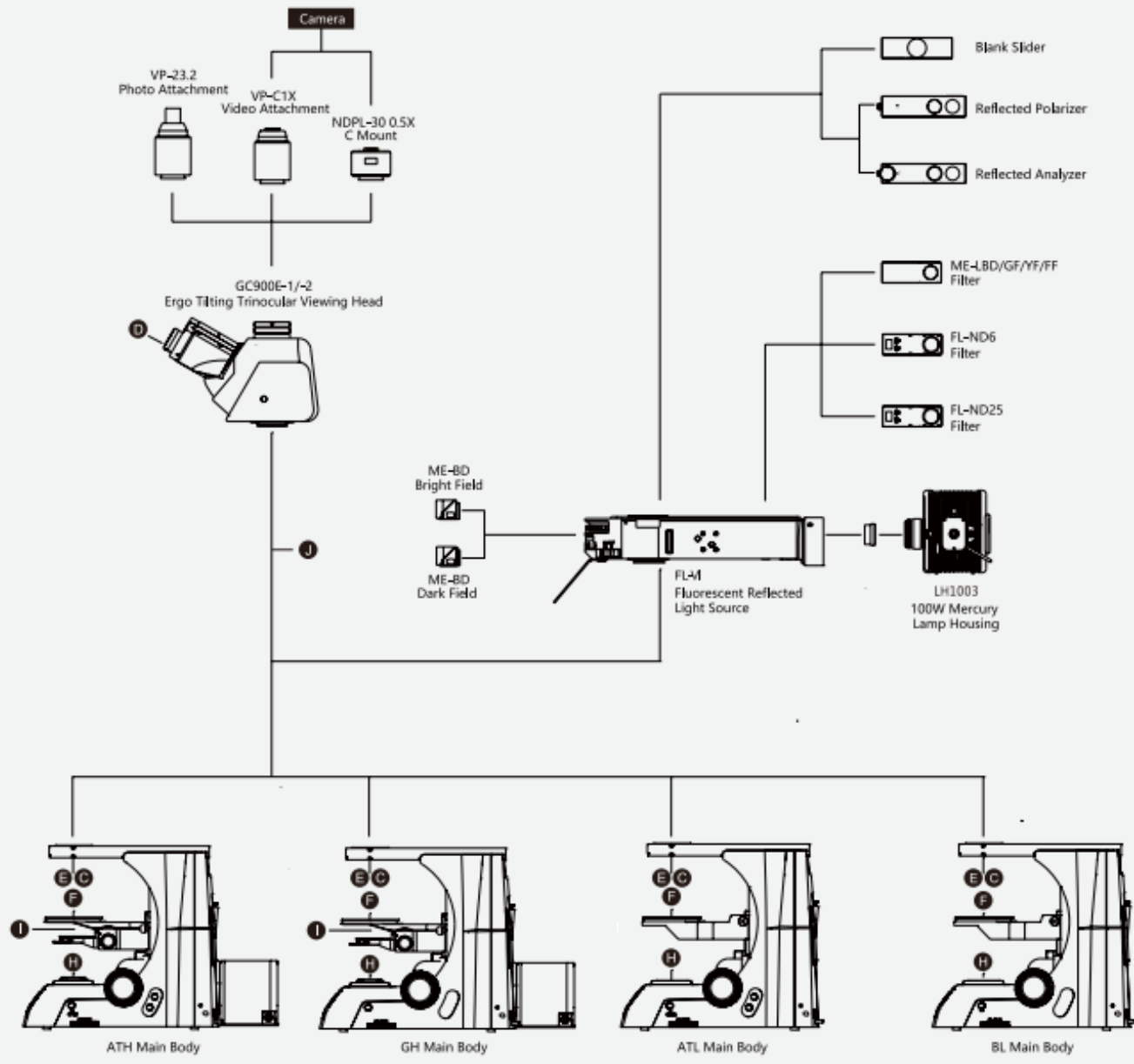


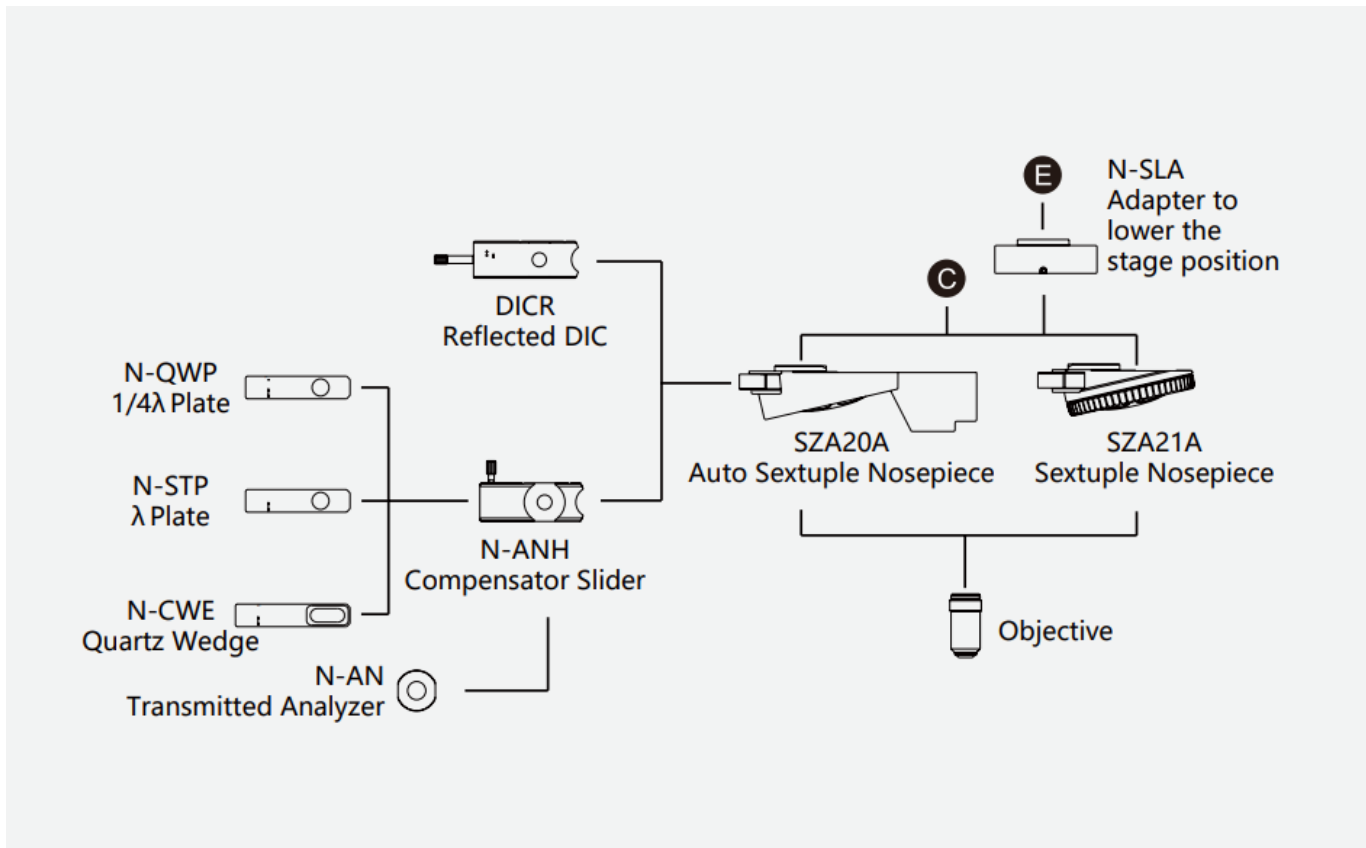
- **Differential Interference Contrast**

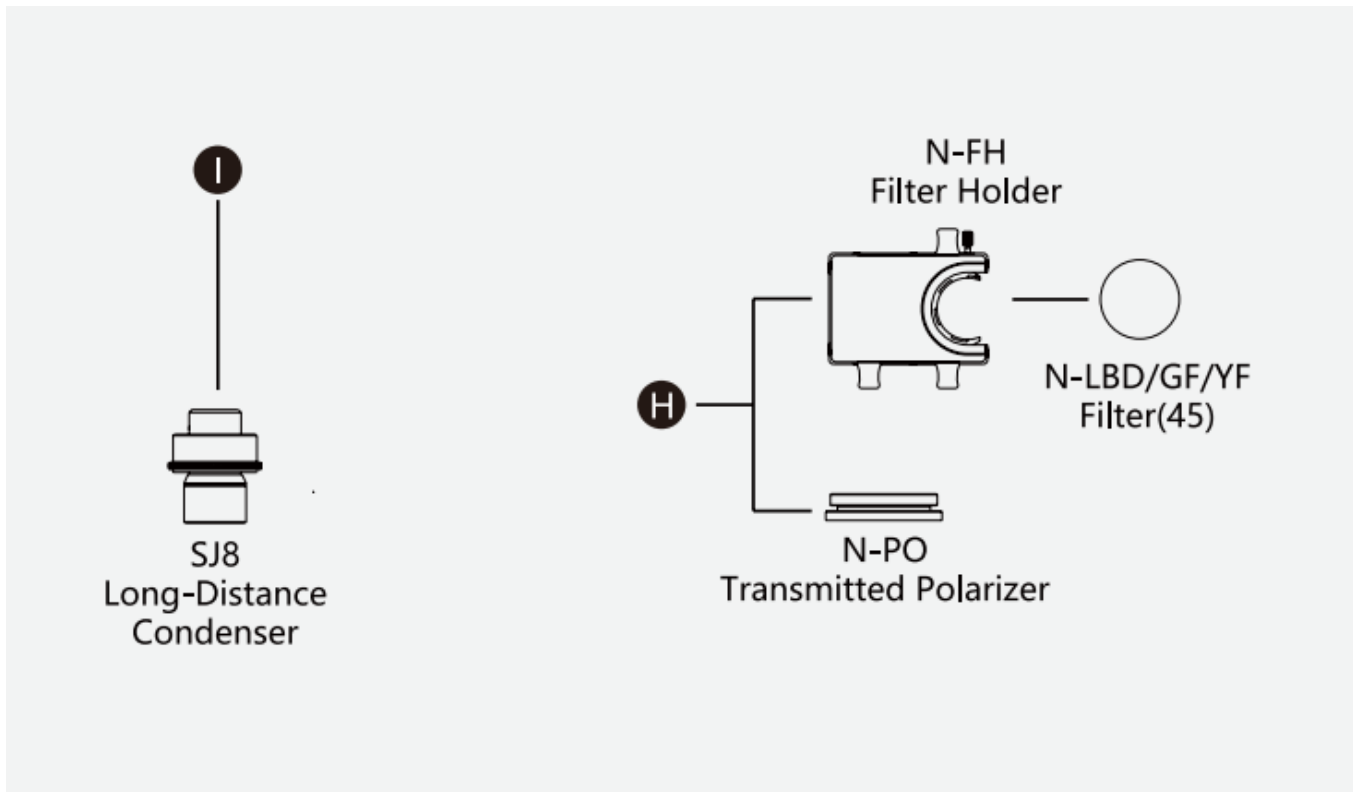
- Microscopic observation technique for relief-like 3D images.
- Customizable with a choice of three specially designed prisms.
- Ideal for examining specimens with minute height differences.



THEORY & METHOD







TECHNICAL SPECIFICATIONS

Upright Metallurgical Microscope Technical Specifications:

QM910-R/TR		
	QM910-R	QM910-TR

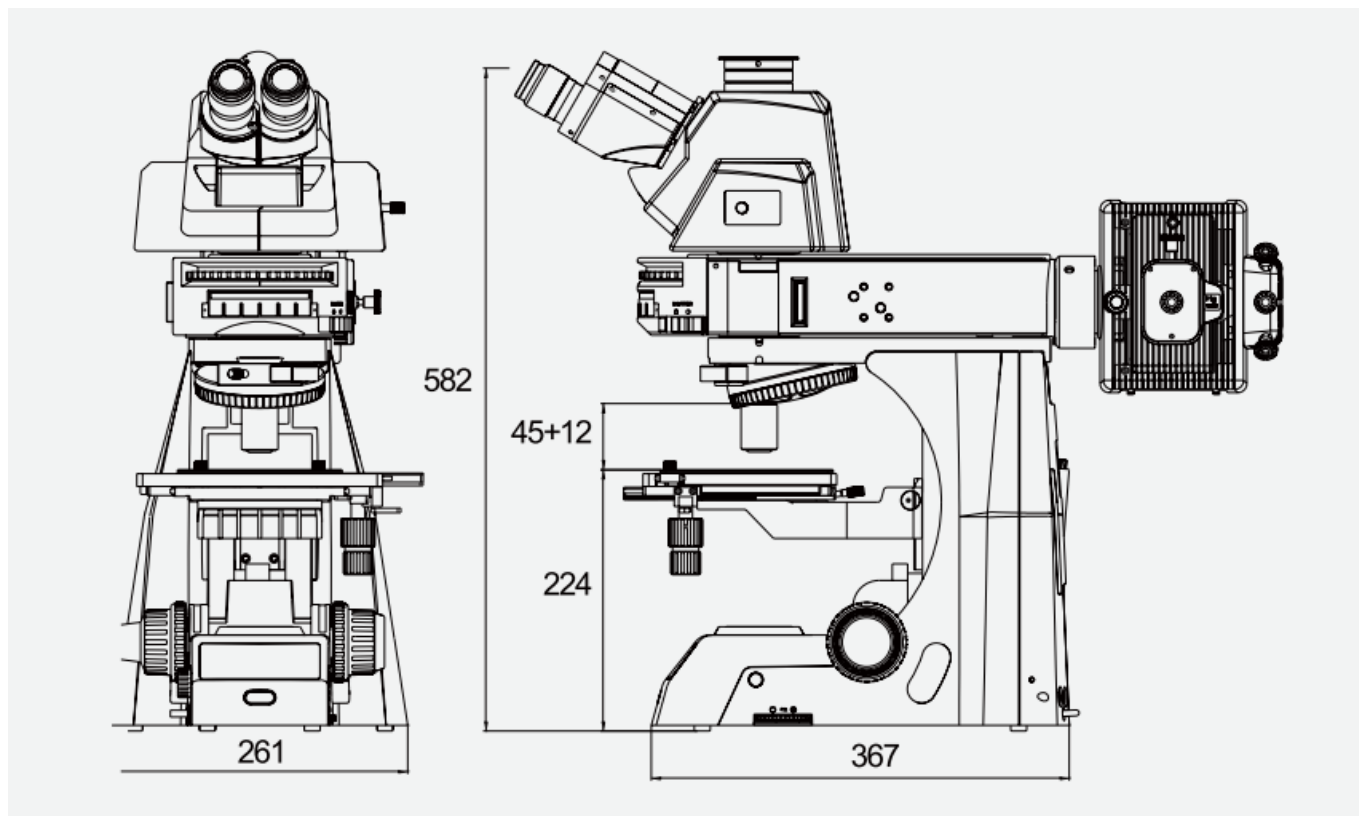
Optical System	NIS45 Infinite optical system	
Eyepiece	SW10X/25 SW10X/22 EW12.5X/16 WF15X/16 WF20X/12	
Viewing Head	Ergo tilting trinocular head, adjustable from 0° to 35°, interpupillary distance 47-78mm Seidentopf trinocular head, inclined at 30°, interpupillary distance 47-78mm Seidentopf binocular head, inclined at 30°, interpupillary distance 47-78mm	
Objective	NIS45 Series objective	
Nosepiece	Sextuplet nosepiece	
Condenser	NA0.65	
Illumination	Reflected light 24v/100w halogen lamp, Kohler illumination	Reflected light 24v/100w halogen lamp, Kohler illumination Transmitted light 24v/100w halogen lamp, Kohler illumination, with ND6/ND25 filter
Focusing	Coaxial coarse and fine adjustment, fine division 1 um, moving range 35mm, sample space 76mm	Coaxial coarse and fine adjustment, Fine Division 1 um, moving range 35mm, sample space 56mm
Stage	4" Stage (right or left handle) Double layer mechanical stage 190X / 152 / 78mmx32m (right or left handle) Double layer mechanical stage 190X / 152 / 78mmx54mm (right or left handle)	
Accessories	Power cord	

QM930-R/TR

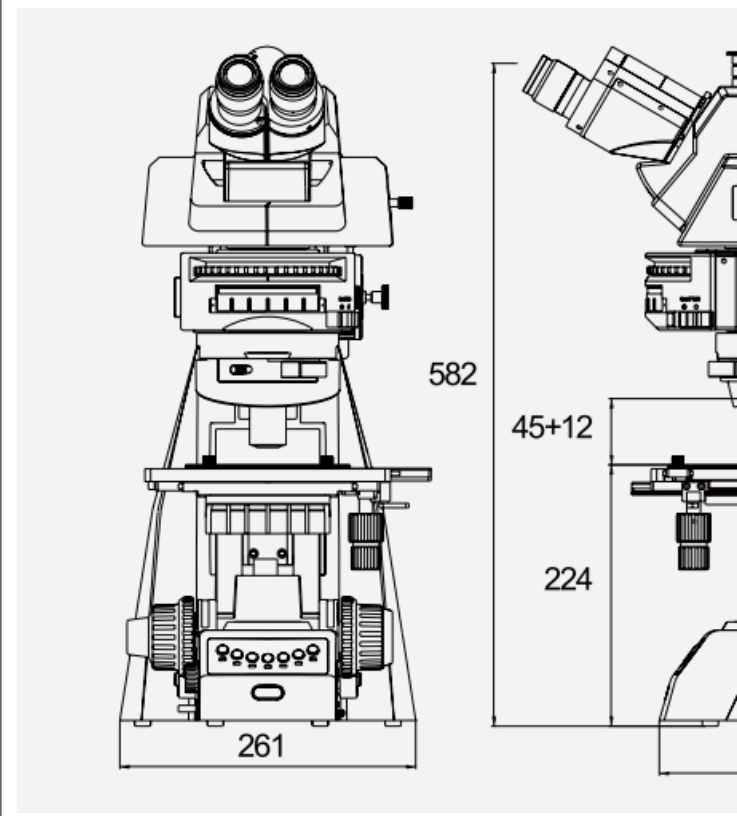
	QM930-R	QM930-TR
Optical System	NIS45 Infinite optical system	
Eyepiece	SW10X/25 SW10X/22 EW12.5X/16 WF15X/16 WF20X/12	
Viewing Head	Ergo tilting trinocular head, adjustable from 0° to 35°, interpupillary distance 47-78mm Seidentopf trinocular head, Inclined at 30°, interpupillary distance 47-78mm Seidentopf binocular head, Inclined at 30°, interpupillary distance 47-78mm	
Video Adapter	0.5 X C-Mount	
Objective	NIS45 Series objective	
Nosepiece	Auto sextuplet nosepiece	
Condenser	NA0.65	
Illumination	Reflected light 12v/100w halogen lamp, kohler illumination	Reflected light 12v/100w halogen lamp, kohler illumination Transmitted light 12v/100w halogen lamp, kohler illumination, with ND6/ND25 filter
Focusing	Coaxial coarse and fine adjustment, fine division 1 um, moving range 35mm, sample space 76mm	Coaxial coarse and fine adjustment, fine division 1 um, moving range 35mm, sample space 56mm
Stage	“4” Stage (right or left handle) Double layer mechanical stage 190X / 152 / 78mmx32m (right or left handle) Double layer mechanical stage 190X / 152 / 78mmx54mm (right or left handle)	
Accessories	Neximage 10.0	

Power cord

Dimensions | Unit:mm

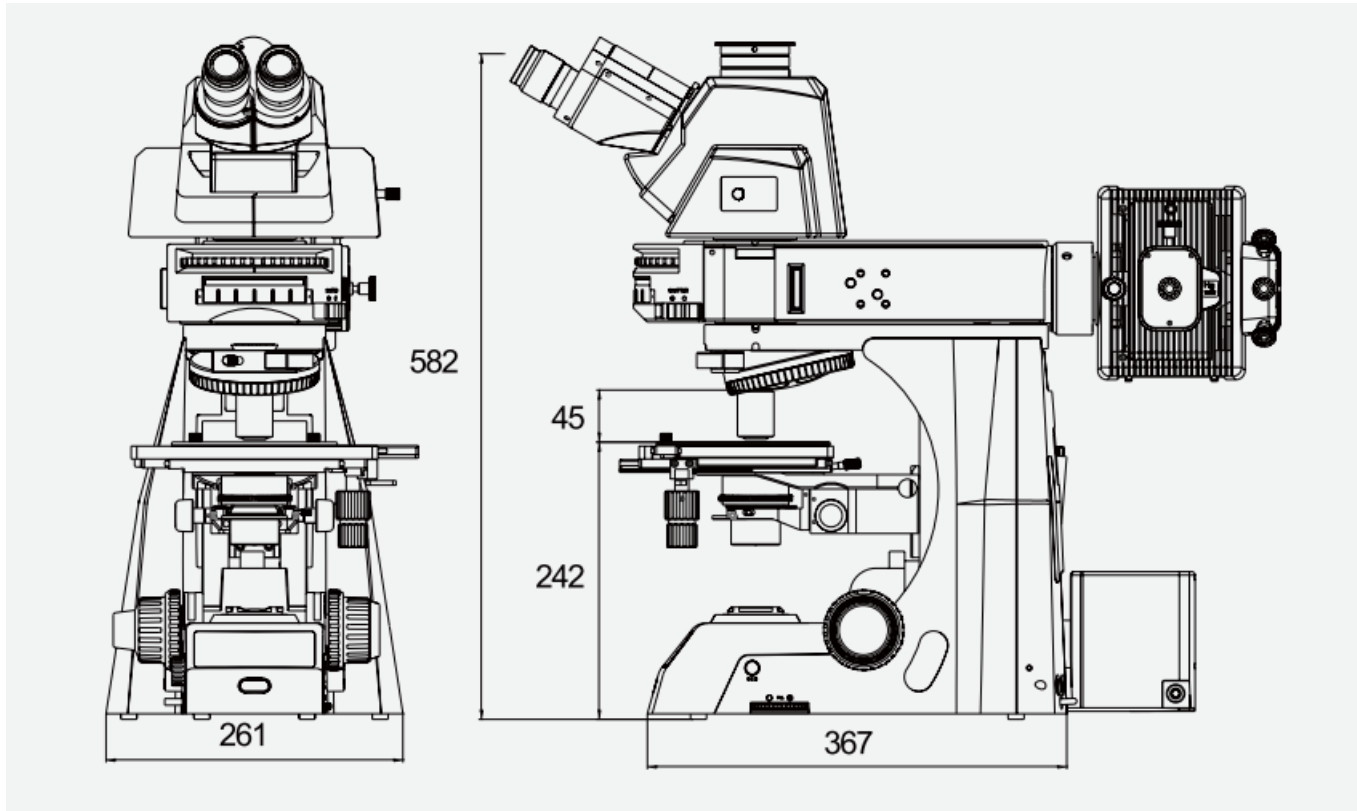


QM910-R

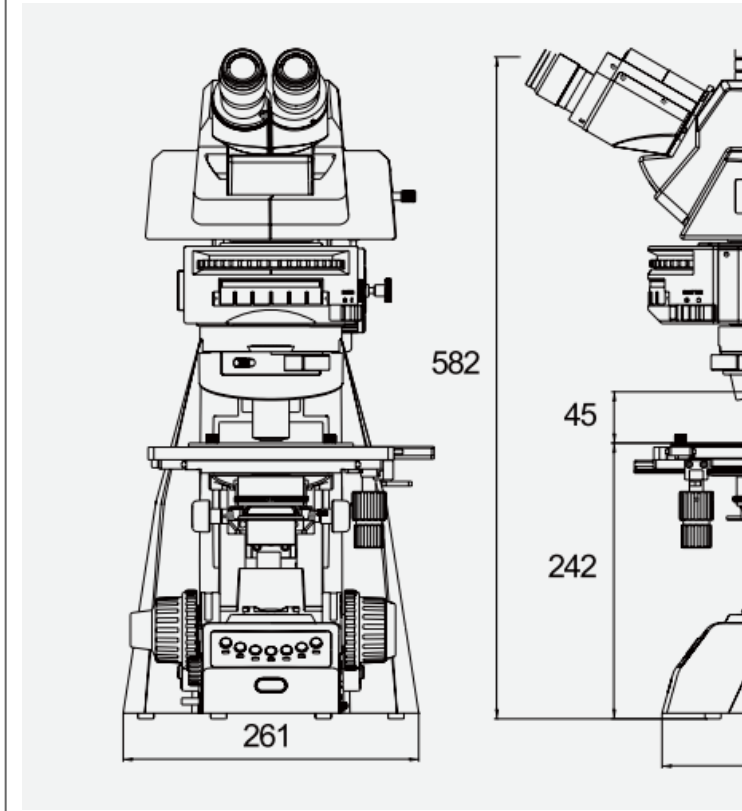


QM930-R

Dimensions | Unit:mm



QM910-R



QM910-TR



ADVANCED TESTING TECHNOLOGIES

USA | CANADA | UAE | GCC | EU | INDIA | APAC | AFRICA | LATIN AMERICA

Connect with us

Contact our **QualiTeam** today to find out how we can help your organization **select the most suitable testing solution** for your application, requirements, and budget.

Qualitest USA (Corporate Sales Office)

Toll-Free: 1.877.884.TEST (8378) | Fax: 954.697.8211
E-mail: info@qualitest-inc.com
Address: 8201 Peters Rd., #1000,
Plantation, FL 33324, USA.

Qualitest Canada & International

Tel: +1.905.944.9825 | Fax: +1.905.944.0304
E-mail: sales@qualitest-inc.com
Address: 70 East Beaver Creek Rd., #9, Richmond Hill,
Ontario L4B 3B2, Canada.

Qualitest Latin America (Mexico and LATAM Region)

E-mail: ventas@qualitest-inc.com

Qualitest KSA (Regional Office)

Tel: +966 11 500 6659
Address: Level 7, 3.09, District 3, King Abdullah
Financial District, Riyadh, Saudi Arabia

Qualitest Singapore (ASIA PACIFIC Regional Office)

Tel: +65 6393 5480 | E-mail: singapore@qualitest-inc.com
Address: 50 Raffles Place, Singapore Land Tower,
Level 46, Singapore, 048623.

Qualitest Indonesia (Representative Office)

Tel: +62 21 2985 9522 | Fax: +62 21 2985 9889
E-mail: indonesia@qualitest-inc.com
Address: One Pacific Place Level 11, Jl. Jend. Sudirman,
Kav. 52-53, SCBD Area, Jakarta 12190, Indonesia.

Qualitest FZE (Regional GCC/ME Office)

Tel: +971 4 8819252 | Fax: +971 4 8819262
Email: gcc@qualitest-inc.com
Address: Jafza One, BB 1610, Jebel Ali Free Zone,
PO Box 261440, Dubai, UAE.

Qualitest India

E-mail: india@qualitest-inc.com
Address: 15th Floor, Dev Corpora, Pokhran Road No.1,
Eastern Express Highway, Thane, Maharashtra,
Mumbai, 400601, India

