



Member of
**(WORLD
of TEST)**

WORLD of TEST.com



SHRINKAGE DRAIN FOR MORTAR AND CONCRETE



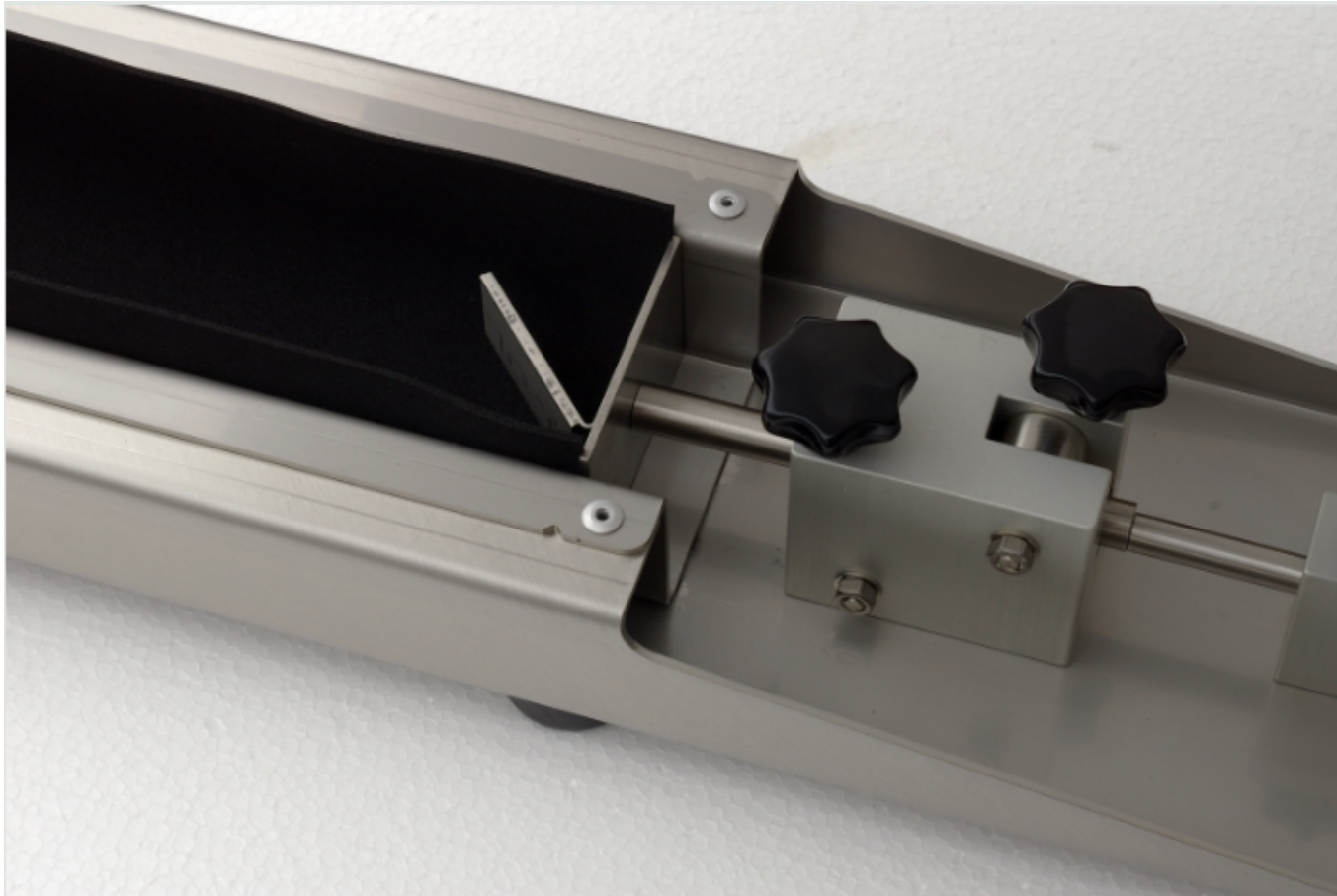
APPLICATIONS

Shrinkage Drain for Mortar and Concrete

The Shrinkage Drain: a 1-meter-long, U-shaped stainless steel profile designed to hold specimens. To minimize wall friction, the drain is covered with a removable Neoprene® sheet. One end of the Shrinkage Drain has a fixed, removable anchor, while the other end has a movable anchor that slides on three wheels. This anchor's movement is tracked by a highly sensitive digital probe. The digital probe is connected to Probe Interface Electronics, which converts the analog signals from the probe into a digital format.

Up to 10 probes can be connected via a digital bus system, allowing for distances of several hundred meters between the probes and the data logger. The system's data logger records data from multiple shrinkage drains and stores it as standard ASCII text files. Optional synchronous registration of temperature and humidity is available, with several temperature channels and a mixed temperature/humidity channel. A balance can also be connected as an option.

The data logger includes an Ethernet network interface, enabling easy integration into a local intranet. Data can be read and visualized using any standard web browser, such as Firefox or Internet Explorer. For further data analysis, programs like Microsoft Excel® or any similar visualization software are recommended.



Standards

No special PC software is required; you only need your web browser. The Shrinkage Drain is now described in the Austrian standard OENORM B 3329:2009-06-01 for grout requirements and test methods."

TECHNICAL SPECIFICATIONS

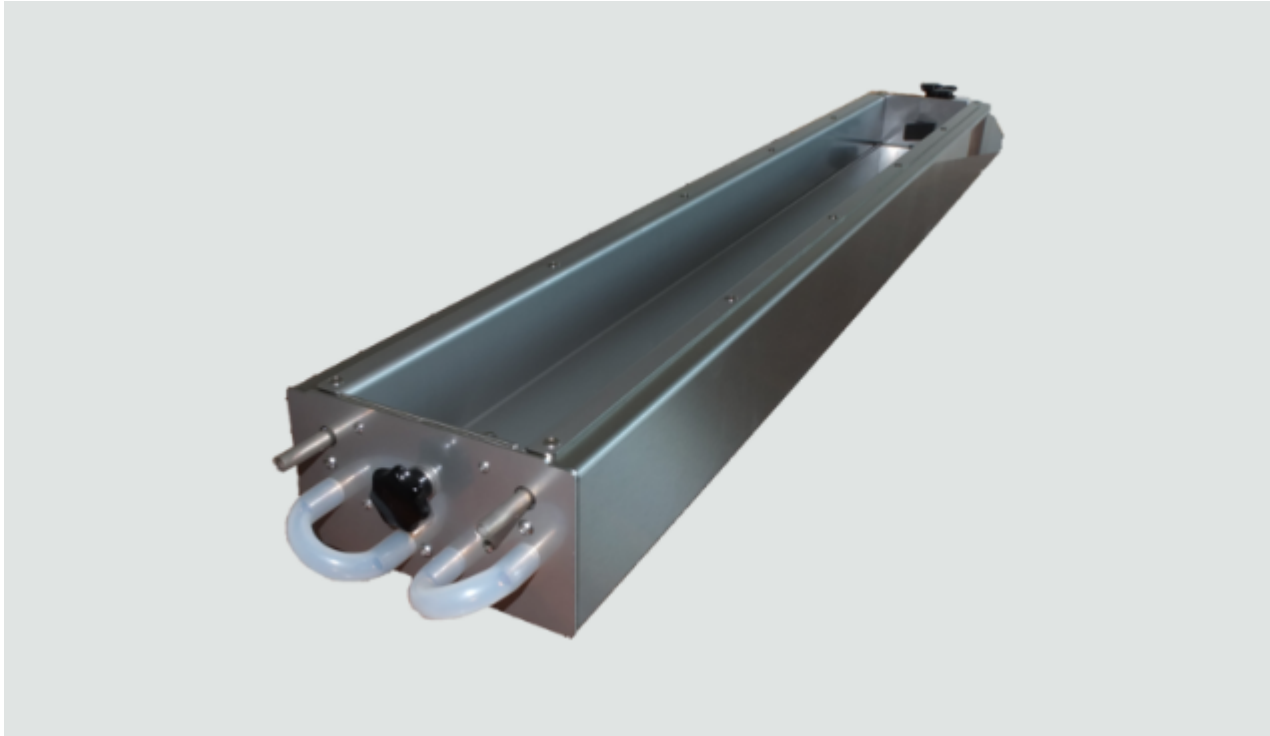
Shrinkage Drain for Mortar and Concrete Technical Specifications

Specimen Length	1000 mm (standard), 500 mm or 250 mm (option)
Specimen Diameter	60 * 40 mm (mortar) or 100 * 60 mm (concrete)
Measurement Range	5 mm
Resolution	0.3 μm
Typical Accuracy	Better than $\pm 2 \mu\text{m}$
Temperature Control (option)	Double wall floor and walls with aluminum core and copper tubes can be connected to a chiller for temperature control
Temperature Measurement (option)	Thermocouple type K for embedding into the specimen
Temperature- and Moisture Measurement (option)	Temperature and humidity sensor for measuring the environmental conditions. Stainless steel housing.

Also available:

- Double-wall drain for cooling and heating (see image below).
- Various lengths, including 250 mm and 500 mm options.
- Different cross sections, such as 60 x 100 mm for concrete.
- Additional sensors for humidity and temperature to measure environmental conditions.
- Thermocouple sensor for embedding into mortar or concrete.

See below for the double-wall version:



Order Codes

Drain for Mortar 60 x 40 x 1000 mm with LVDT displacement sensor	S0103
Drain for Mortar 60 x 40 x 1000 mm w/o LVDT	S0102
Drain for Mortar 60 x 40 x 250 mm with LVDT	S01044
Drain for Mortar 60 x 40 x 500 mm with LVDT	S0104
Cellular Rubber for the Mortar Drain	S0008
Drain for Concrete 100 x 60 x 1000 mm with LVDT	S0033
Drain for Concrete 100 x 60 x 1000 mm w/o LVDT	S0034

Drain for Concrete 100 x 60 x 500 mm with LVDT	S0036
Cellular Rubber Sheet for Concrete	S0014
Anchor for the Mortar and Concrete Drains	S0020
Double Wall Temperature Control Option	S0035
Data Logger for up to 10 Drains	S0001
Data Logger Input Thermocouple Type K, incl. Sensor	S0027
Data Logger Input Temperature/Humidity Sensor, incl. combined Sensor	S0016



ADVANCED TESTING TECHNOLOGIES

USA | CANADA | UAE | GCC | EU | INDIA | APAC | AFRICA | LATIN AMERICA

Connect with us

Contact our **QualiTeam** today to find out how we can help your organization **select the most suitable testing solution** for your application, requirements, and budget.

Qualitest USA (Corporate Sales Office)

Toll-Free: 1.877.884.TEST (8378) | Fax: 954.697.8211
E-mail: info@qualitest-inc.com
Address: 8201 Peters Rd., #1000,
Plantation, FL 33324, USA.

Qualitest Canada & International

Tel: +1.905.944.9825 | Fax: +1.905.944.0304
E-mail: sales@qualitest-inc.com
Address: 70 East Beaver Creek Rd., #9, Richmond Hill,
Ontario L4B 3B2, Canada.

Qualitest Latin America (Mexico and LATAM Region)

E-mail: ventas@qualitest-inc.com

Qualitest KSA (Regional Office)

Tel: +966 11 500 6659
Address: Level 7, 3.09, District 3, King Abdullah
Financial District, Riyadh, Saudi Arabia

Qualitest Singapore (ASIA PACIFIC Regional Office)

Tel: +65 6393 5480 | E-mail: singapore@qualitest-inc.com
Address: 50 Raffles Place, Singapore Land Tower,
Level 46, Singapore, 048623.

Qualitest Indonesia (Representative Office)

Tel: +62 21 2985 9522 | Fax: +62 21 2985 9889
E-mail: indonesia@qualitest-inc.com
Address: One Pacific Place Level 11, Jl. Jend. Sudirman,
Kav. 52-53, SCBD Area, Jakarta 12190, Indonesia.

Qualitest FZE (Regional GCC/ME Office)

Tel: +971 4 8819252 | Fax: +971 4 8819262
Email: gcc@qualitest-inc.com
Address: Jafza One, BB 1610, Jebel Ali Free Zone,
PO Box 261440, Dubai, UAE.

Qualitest India

E-mail: india@qualitest-inc.com
Address: 15th Floor, Dev Corpora, Pokhran Road No.1,
Eastern Express Highway, Thane, Maharashtra,
Mumbai, 400601, India

