



Member of  
**(WORLD  
of TEST)**

**WORLD of TEST.com**

# MANHOLE IMPACT TESTER



## **STANDARDS**

---

BS EN 13598

## **APPLICATIONS**

---

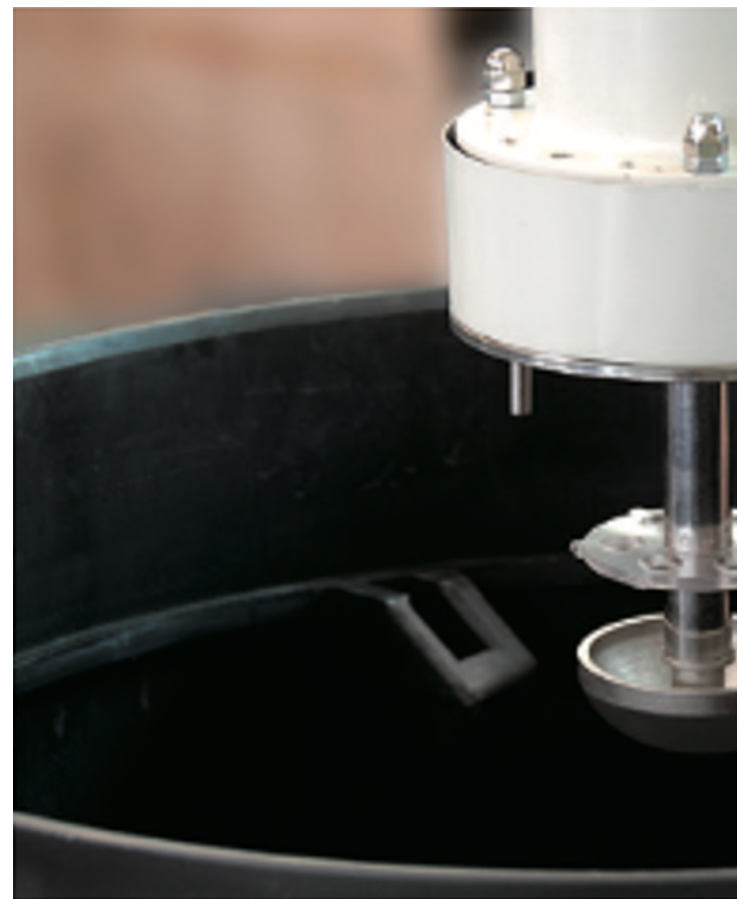
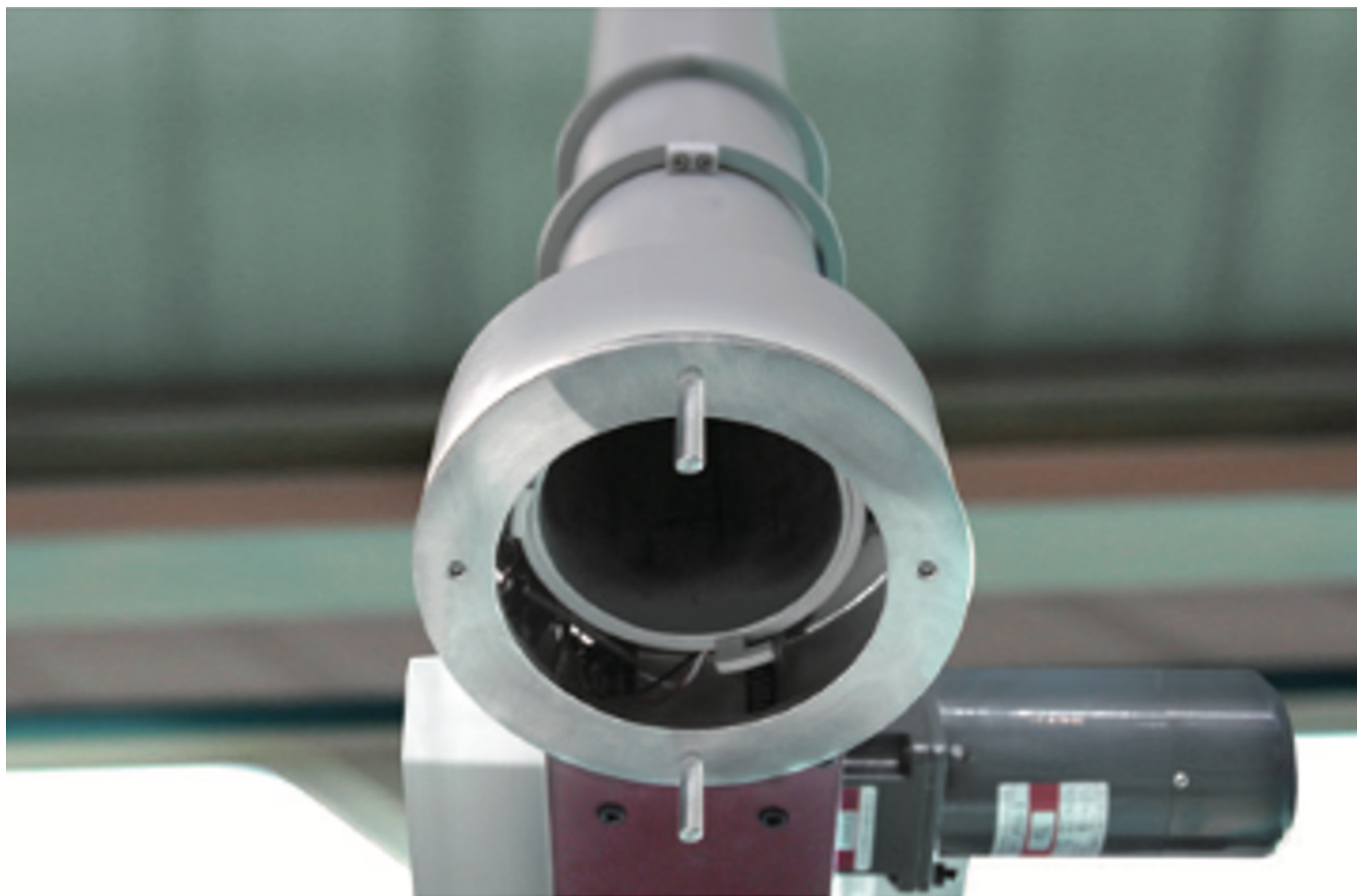
### **Plastic Manhole Impact Tester - QualiPMIT™**

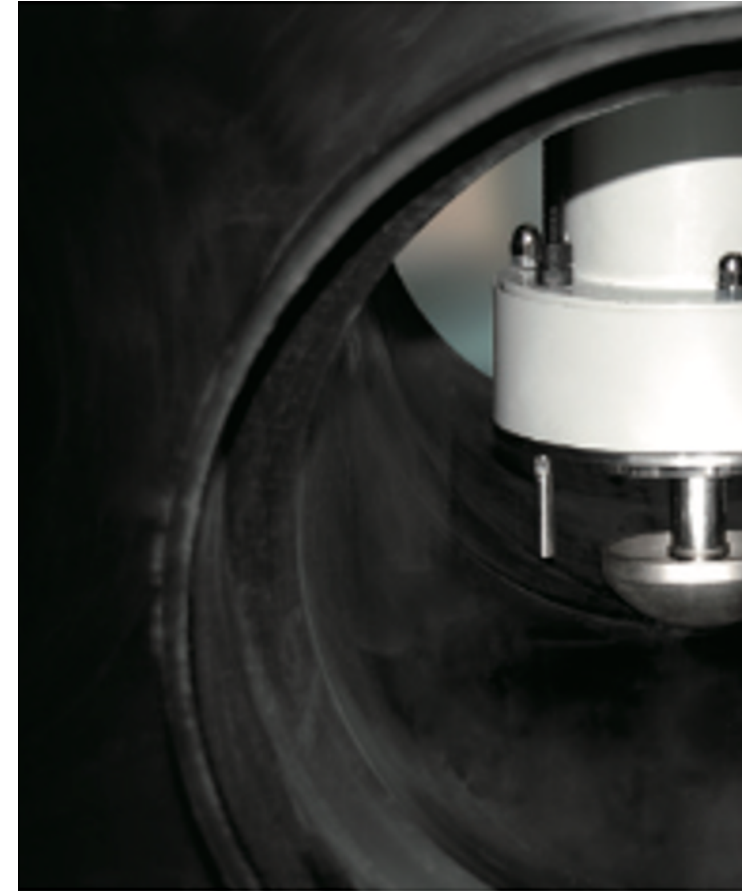
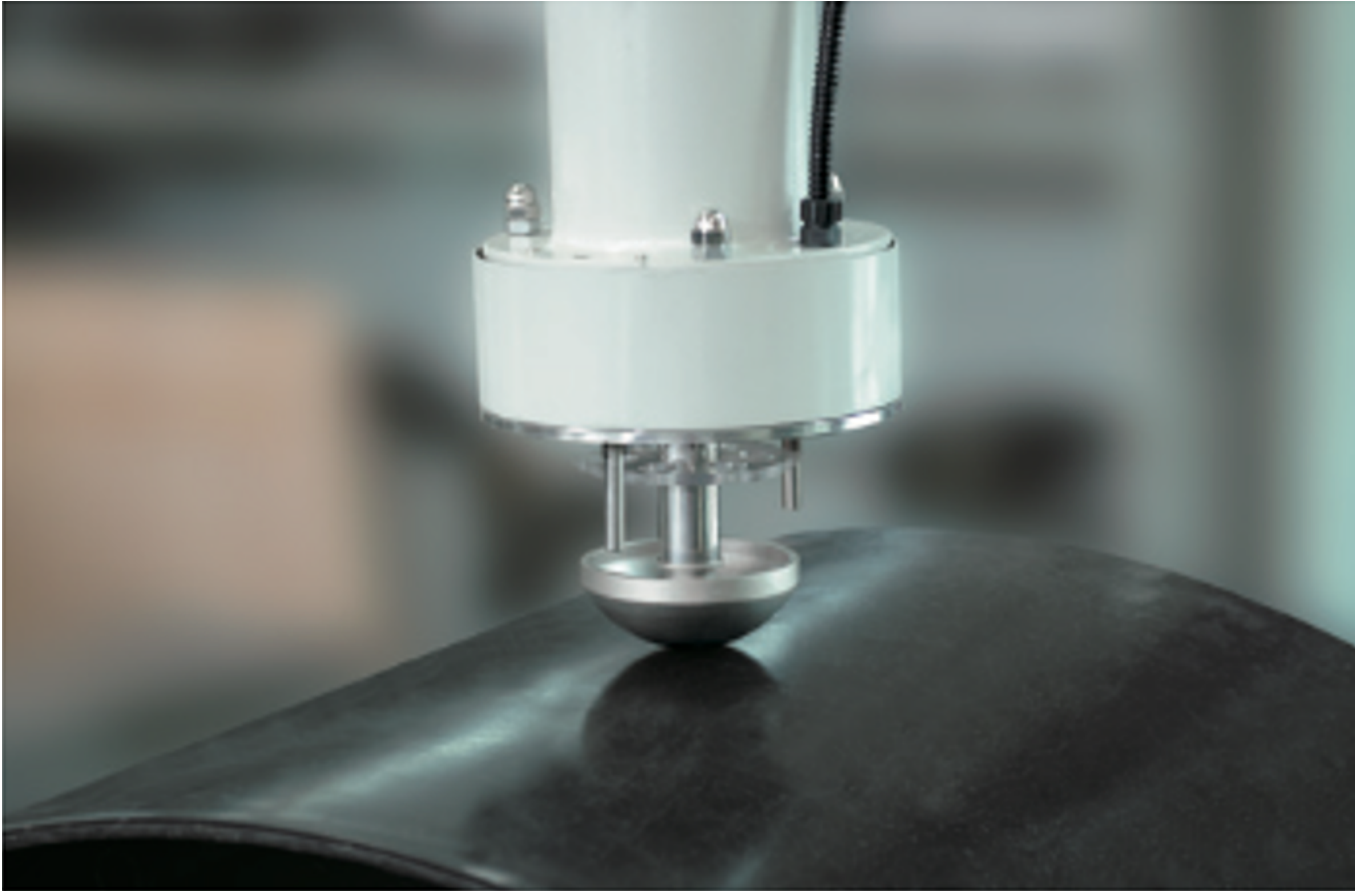
Plastic Manhole Impact Tester - QualiPMIT™ evaluates the impact resistance of manhole bases and walls.

#### **Test Procedure:**

A 1kg impact weight with a 50mm radius of curvature is released from a height of 2.5m, striking the center of the manhole base's flow channel. After impact, the base is inspected for any damage.

#### **Accessories**





## **TECHNICAL SPECIFICATIONS**

---

### **Plastic Manhole Impact Tester - QualiPMIT™ Technical Specifications**

<b>Item</b>	<b>Parameter</b>
Manhole base diameter range (Sowchannel impact)	Φ315mm □ Φ1600mm

Item	Parameter
Manhole base diameter range (Side wall impact)	Φ315mm□ Φ1400mm
Impact height	2.5m
Type of impact striker	d90
Mass of impact striker	1.0kg
Protection tube lifting journey	1.5m
Protection tube lifting speed	1.2m/min
Impact striker lifting method	Vacuum suction
Test speed measuring device	Optional
Outside dimension	1.95m x 1.42m x 4.70m (L×W×H)
Air resource	0.5MPa-0.8MPa, compressed air
Voltage	220(1-15%)VAC□ 220(1+10%) 2.5kW 50Hz (110V is also available)
Weight	1200kg



ADVANCED TESTING TECHNOLOGIES

USA | CANADA | UAE | GCC | EU | INDIA | APAC | AFRICA | LATIN AMERICA

## Connect with us

Contact our **QualiTeam** today to find out how we can help your organization **select the most suitable testing solution** for your application, requirements, and budget.

### Qualitest USA (Corporate Sales Office)

Toll-Free: 1.877.884.TEST (8378) | Fax: 954.697.8211  
E-mail: [info@qualitest-inc.com](mailto:info@qualitest-inc.com)  
Address: 8201 Peters Rd., #1000,  
Plantation, FL 33324, USA.

### Qualitest Canada & International

Tel: +1.905.944.9825 | Fax: +1.905.944.0304  
E-mail: [sales@qualitest-inc.com](mailto:sales@qualitest-inc.com)  
Address: 70 East Beaver Creek Rd., #9, Richmond Hill,  
Ontario L4B 3B2, Canada.

### Qualitest Latin America (Mexico and LATAM Region)

E-mail: [ventas@qualitest-inc.com](mailto:ventas@qualitest-inc.com)

### Qualitest KSA (Regional Office)

Tel: +966 11 500 6659  
Address: Level 7, 3.09, District 3, King Abdullah  
Financial District, Riyadh, Saudi Arabia

### Qualitest Singapore (ASIA PACIFIC Regional Office)

Tel: +65 6393 5480 | E-mail: [singapore@qualitest-inc.com](mailto:singapore@qualitest-inc.com)  
Address: 50 Raffles Place, Singapore Land Tower,  
Level 46, Singapore, 048623.

### Qualitest Indonesia (Representative Office)

Tel: +62 21 2985 9522 | Fax: +62 21 2985 9889  
E-mail: [indonesia@qualitest-inc.com](mailto:indonesia@qualitest-inc.com)  
Address: One Pacific Place Level 11, Jl. Jend. Sudirman,  
Kav. 52-53, SCBD Area, Jakarta 12190, Indonesia.

### Qualitest FZE (Regional GCC/ME Office)

Tel: +971 4 8819252 | Fax: +971 4 8819262  
Email: [gcc@qualitest-inc.com](mailto:gcc@qualitest-inc.com)  
Address: Jafza One, BB 1610, Jebel Ali Free Zone,  
PO Box 261440, Dubai, UAE.

### Qualitest India

E-mail: [india@qualitest-inc.com](mailto:india@qualitest-inc.com)  
Address: 15th Floor, Dev Corpora, Pokhran Road No.1,  
Eastern Express Highway, Thane, Maharashtra,  
Mumbai, 400601, India

